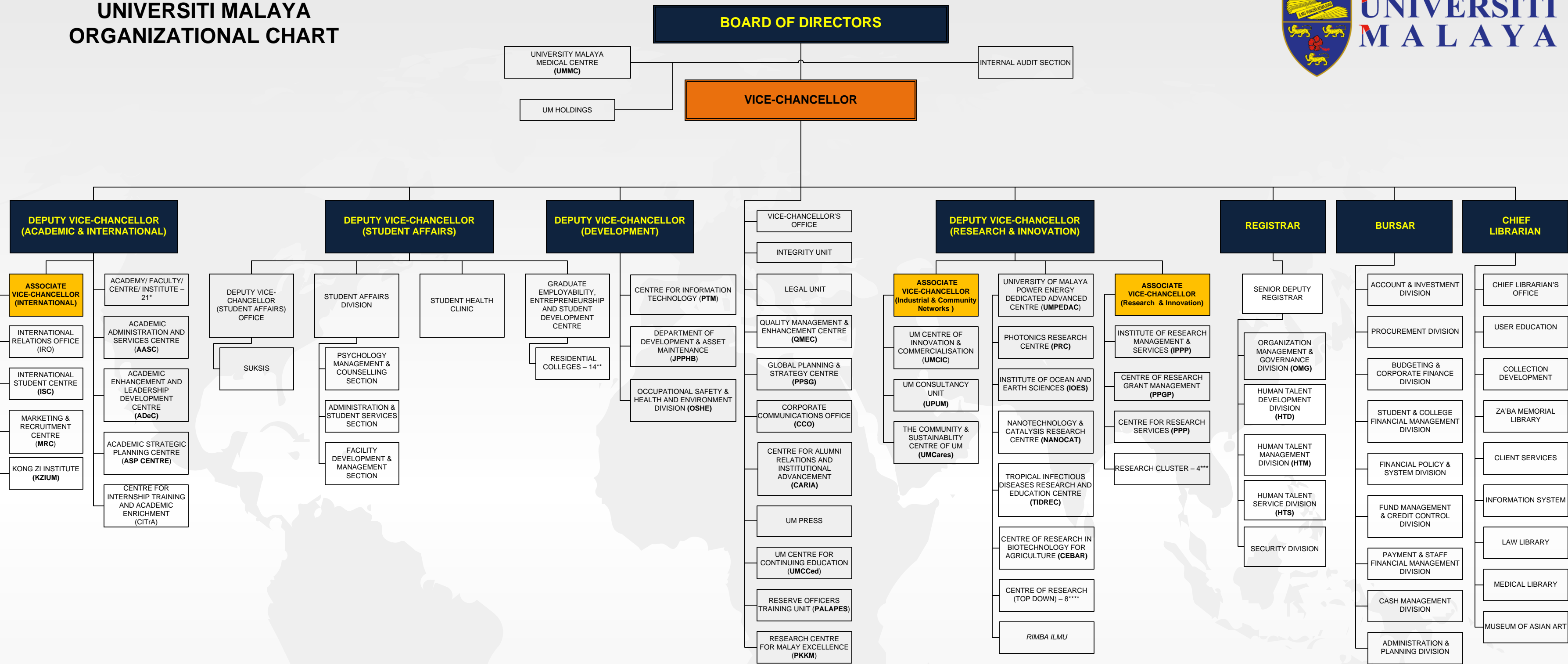


# UNIVERSITI MALAYA ORGANIZATIONAL CHART



- ACADEMY/ FACULTY/ CENTRE/ INSTITUTE\***
- ACADEMY OF ISLAMIC STUDIES
  - ACADEMY OF MALAY STUDIES
  - FACULTY OF BUILT ENVIRONMENT
  - FACULTY OF LANGUAGES & LINGUISTICS
  - FACULTY OF ECONOMICS & ADMINISTRATION
  - FACULTY OF PHARMACY
  - FACULTY OF ENGINEERING
  - FACULTY OF DENTISTRY
  - FACULTY OF BUSINESS & ACCOUNTANCY
  - FACULTY OF EDUCATION
  - FACULTY OF MEDICINE
  - FACULTY OF SCIENCE
  - FACULTY OF COMPUTER SCIENCE AND INFORMATION TECHNOLOGY
  - FACULTY OF LAW
  - FACULTY OF ARTS & SOCIAL SCIENCES
  - CENTRE FOR SPORT AND EXERCISE SCIENCES
  - FACULTY OF CREATIVE ARTS
  - CENTRE FOR FOUNDATION STUDIES IN SCIENCE
  - INSTITUTE FOR ADVANCED STUDIES
  - ASIA-EUROPE INSTITUTE
  - INTERNATIONAL INSTITUTE OF PUBLIC POLICY & MANAGEMENT

- RESIDENTIAL COLLEGES\*\***
- TUANKU ABDUL RAHMAN RESIDENTIAL COLLEGE
  - TUANKU BAHYAH RESIDENTIAL COLLEGE
  - TUANKU KURSHIAH RESIDENTIAL COLLEGE
  - BESTARI RESIDENTIAL COLLEGE
  - DAYASARI RESIDENTIAL COLLEGE
  - IBNU SINA RESIDENTIAL COLLEGE
  - ZA'BA RESIDENTIAL COLLEGE
  - KINABALU RESIDENTIAL COLLEGE
  - TUN SYED ZAHIRUDDIN RESIDENTIAL COLLEGE
  - TUN AHMAD ZAIDI RESIDENTIAL COLLEGE
  - UNGKU AZIZ RESIDENTIAL COLLEGE
  - RAJA DR. NAZRIN SHAH RESIDENTIAL COLLEGE
  - NILAM PURI RESIDENTIAL COLLEGE
  - OFF CAMPUS

- RESEARCH CLUSTER\*\*\***
- INNOVATIVE INDUSTRY & SUSTAINABILITY SCIENCE
  - HEALTH & WELL-BEING
  - FRONTIERS OF THE NATURAL WORLD
  - SOCIAL ADVANCEMENT & HAPPINESS

- CENTRE OF RESEARCH\*\*\*\***
- INSTITUTE OF CHINA STUDIES (ICS)
  - UNIVERSITY OF MALAYA HALAL RESEARCH CENTRE (UMHRC)
  - NATIONAL CENTRE FOR PARTICLE PHYSICS (NCPP)
  - CENTRE OF CIVILIZATIONAL DIALOGUE
  - CENTRE OF PRINTABLE ELECTRONICS (CPE)
  - NATIONAL ANTARCTIC RESEARCH CENTRE (NARC)
  - CENTRE FOR INTEGRATED STEM EXPLORATION (UM STEM)
  - CENTRE FOR RESEARCH IN INDUSTRY 4.0 (CRI4.0)